

**NOTES; UNLESS OTHERWISE SPECIFIED:**

- ALL DIMENSIONS ARE PRELIMINARY AND SHOWN FOR REFERENCE ONLY.
- MATERIAL, INTERNAL HEX HEAD VARIANT:**  
 00669-001, FOR STAINLESS STEEL, TYPE 316 PER QQ-S-763, MAKE FROM 00448-001  
 00669-002, FOR TITANIUM, GRADE 5, ASTM-B-348, MAKE FROM 00448-002  
 00669-003, FOR MONEL K-500, MAKE FROM 00448-003  
 00669-004, FOR COPPER BERYLLIUM, MAKE FROM 00448-004  
 00669-005, FOR ALUMINUM ALLOY 6061-T6, MAKE FROM 00448-005 (SPECIAL ORDER ONLY)  
 00669-006, FOR INCONEL 625, MAKE FROM 00448-006  
 OTHER NON-STANDARD MATERIALS AVAILABLE UPON SPECIAL ORDER

**MATERIAL, EXTERNAL HEX HEAD VARIANT: ( SPECIAL ORDER ONLY )**  
 00669-101, FOR STAINLESS STEEL, TYPE 316 PER QQ-S-763, MAKE FROM 01298-001  
 00669-102, FOR TITANIUM, GRADE 5, ASTM-B-348, MAKE FROM 01298-002  
 00669-103, FOR MONEL K-500, MAKE FROM 01298-003  
 00669-104, FOR COPPER BERYLLIUM, MAKE FROM 01298-004  
 00669-105, FOR ALUMINUM ALLOY 6061-T6, MAKE FROM 01298-005  
 00669-106, FOR INCONEL 625, MAKE FROM 01298-006  
 OTHER NON-STANDARD MATERIALS AVAILABLE UPON SPECIAL ORDER

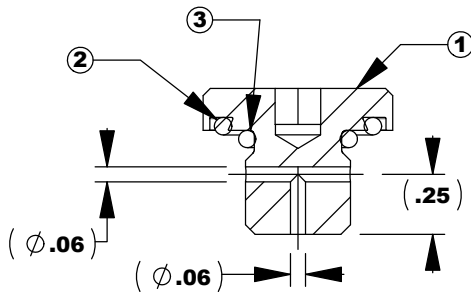
- FINISH:**  
 STAINLESS STEEL : PASSIVATE PER QQ-P-35, TYPE VI.  
 ALUMINUM: HARD ANODIZE IN ACCORDANCE WITH MIL-A-8625, TYPE III, CLASS 2, COLOR BLACK WITH NICKEL ACETATE SEAL. COATING THICKNESS .002 ±10%. ELECTRODE ATTACHMENT ON THREADED SECTION ONLY. ALL DIMENSIONS APPLY AFTER ANODIZING  
 ALL OTHERS : NONE.

- TORQUE TO 50-75 IN-POUNDS.
- ALL PLUGS OPERATING PRESSURE RATED TO 6000 METERS SEA WATER.
- SPOTFACES INDICATED TO HAVE A 32 MICROINCH FINISH WITH NO SWIRL MARKS. IF ANY MARKS ARE VISIBLE, POLISH SURFACE WITHOUT VIOLATING SURFACE FLATNESS.

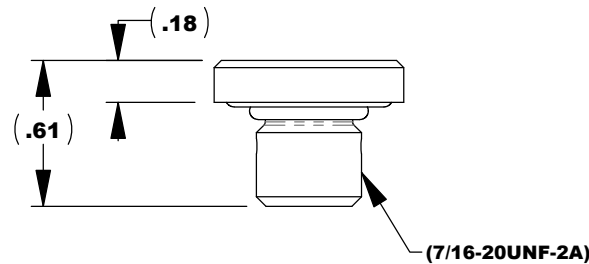
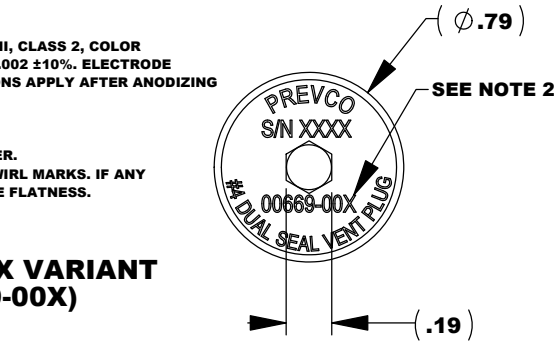
CUSTOMER  
INTERFACE  
DRAWING

REV.	DESCRIPTION	DATE	APP.
F	REVISE TO SOLIDWORKS	06/05/2007	
G	REDRAWN TO ADD EXT HEX VARIANT	08/12/2008	JAN
H	ADDED INFO (SHT 2)	10/21/2008	JAN
J	ADDED INCONEL OPTION	10/06/2010	JAN
K	CHANGE INCONEL DASH NO.	10/22/2010	JAN
L	ADD TORQUE REQMT	10/30/2010	JAN
M	ADDED NOTE 5	11/27/2012	JAN
N	SHT 2: $\varnothing$ .300 WAS $\varnothing$ .187	10/03/2016	BD
P	ITEM # 2 & 3 VITON 90 WAS 90 DURO	03/08/2022	RK
Q	LBO MADE MANDATORY	02/12/2026	ASE

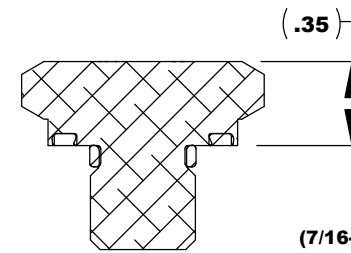
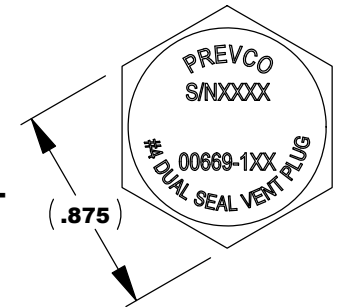
**INTERNAL HEX VARIANT  
(ORDER 00669-00X)**



SECTION A-A



**EXTERNAL HEX VARIANT  
(ORDER 00669-10X)  
AVAILABLE BY  
SPECIAL ORDER ONLY**



SECTION B-B

INTERNAL HEX:	EXTERNAL HEX:	ITEM NO.	PART NUMBER	DESCRIPTION	QTY.
		1	COMMERCIAL GRADE	PREVCO Dual Seal No. 4 Plug	1
		2	O-Ring-2-015	O-ring, Plug Face, 2-015, 90, Viton 90	1
		3	O-Ring-3-904	O-ring, Plug Face, 3-904, 90, Viton 90	1

**PROPRIETARY NOTE**  
 All data and information contained or disclosed by this document is confidential and proprietary information of PREVCO Subsea LLC and all rights therein are expressly reserved. By accepting this material the recipient agrees that the material and the information therein is held in confidence and in trust and will not be used, copied, reproduced in whole or in part, nor its content revealed in any manner to others, except to meet the specific purpose for which it was delivered.

TOLERANCES UNLESS NOTED	<b>PREVCO SUBSEA LLC</b>		DRAWING TITLE		
SEE NOTE 1	MODEL NO. N/A		DUAL SEAL VENT PORT (#4) - INTERFACE DRAWING LBO		
PRIMARY UNITS ARE INCHES	CAGE CODE: 1PV08	DRAWN BY: ASE	DRAWING NO. 00669-000		
	APPROVED BY: JAN	DRAWN DATE: 02/12/26	SHEET 1 of 2	REV Q	

