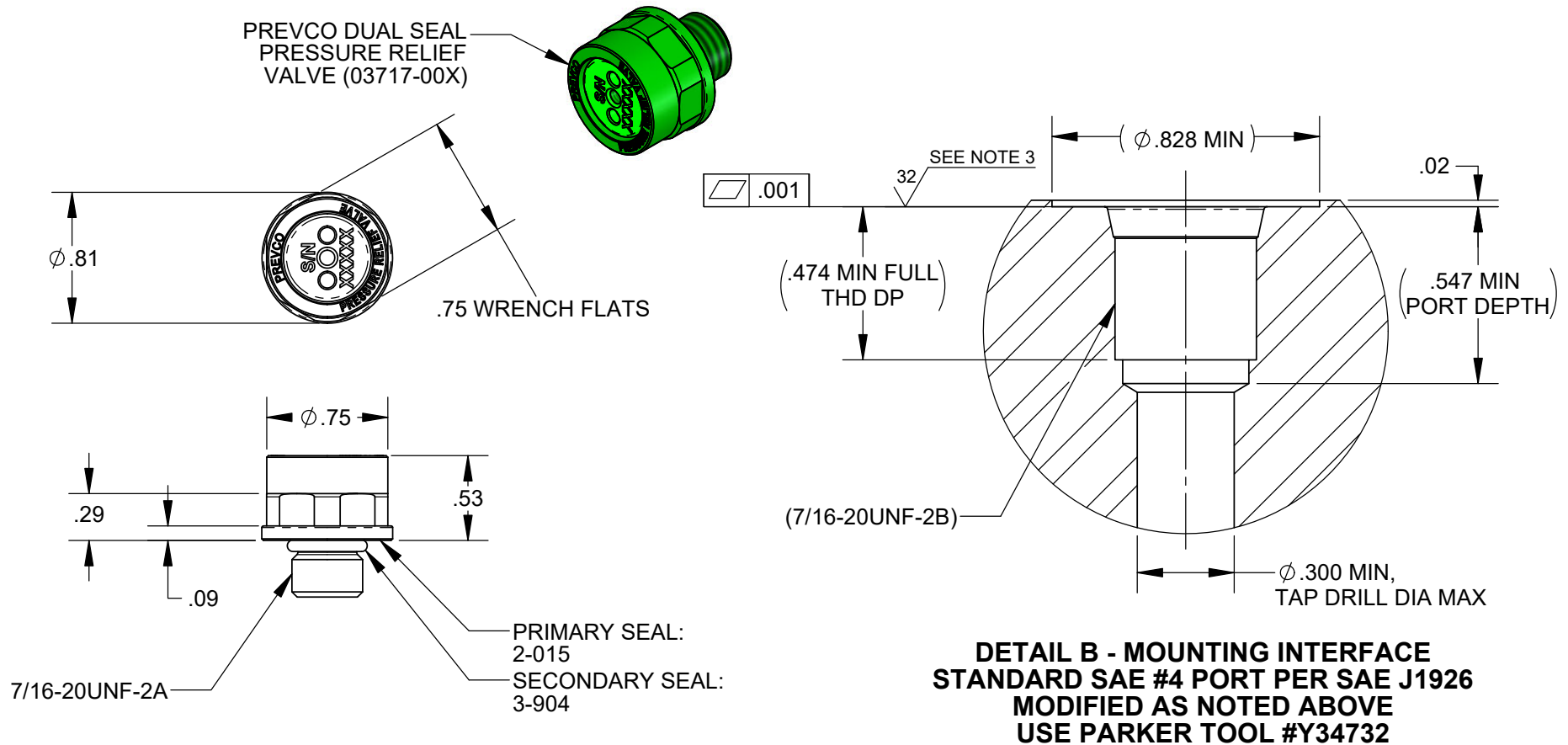


**NOTES, UNLESS OTHERWISE SPECIFIED:**

1. ALL DIMENSIONS ARE NOMINAL AND SHOWN FOR REFERENCE.
2. **01104-001** HOUSING & POPPET MATERIAL; TITANIUM, GRADE 5 (6AL-4V).  
FINISH: 1. TIODIZE OR EQUIVALENT COATING - 001  
2. NO COATING - 001NT
3. **01104-002** HOUSING & POPPET MATERIAL; INCONEL 718
4. **01104-003** HOUSING & POPPET MATERIAL; INCONEL 625  
FINISH: NONE
3. SPOTFACE INDICATED TO HAVE A 32 MICROINCH FINISH WITH NO SWIRLMARKS.
4. TORQUE TO 55-75 INCH-LBS.

REVISIONS			
REV.	DESCRIPTION	DATE	APP.
N	CHANGED NOTE 3	01/10/19	BD
P	ADDED 01104-002, (03717-00X) WAS (01458-001), SEE NOTE 3 WAS NOTE 4	6/13/2022	JH
Q	CHANGED DRAWING PN TO -XXX AND ADDED -003	11/15/2022	RK



<p><b>PROPRIETARY NOTE</b></p> <p>All data and information contained or disclosed by this document is confidential and proprietary information of <b>PREVCO Subsea LLC</b> and all rights therein are expressly reserved. By accepting this material the recipient agrees that the material and the information therein is held in confidence and in trust and will not be used, copied, reproduced in whole or in part, nor its content revealed in any manner to others, except to meet the specific purpose for which it was delivered.</p>	TOLERANCES UNLESS NOTED				<p><b>PREVCO SUBSEA LLC</b></p> <p>PROJECT: GENERIC MODEL NO. PREFIX: MOD 5</p>		DRAWING TITLE				
	.X	.XX	.XXX	ANGLES			DUAL SEAL PRESSURE RELIEF VALVE - 10 PSI ICD				
	$\pm .050$	$\pm .010$	$\pm .003$	$\pm .5^\circ$	CAGE CODE: 1PV08		DRAWING NO. 01104-XXX				
	CONCENTRICITY .004 TIR				DRAWN BY: VCE		APPR. BY: JH		DRAWN DATE: 11/14/17		SHEET 1 of 1
PRIMARY UNITS ARE INCHES											