

NOTES, UNLESS OTHERWISE SPECIFIED:

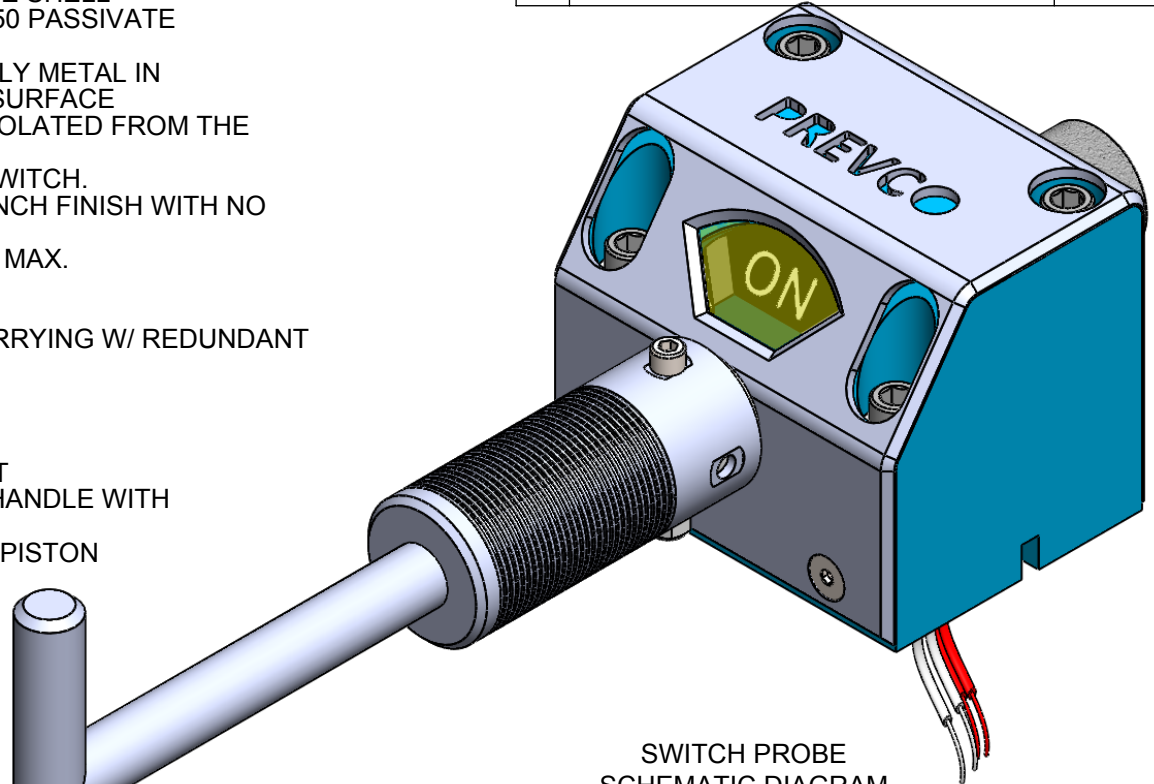
1. MATERIALS:

- FASTENERS: CRES 316 OTHER MATERIALS AVAILABLE
- SWITCH PROBE: Ti, GRADE 5, TIODIZED
- BODY: DELRIN WITH CRES 316 PASSIVATE SHELL
- HANDLE: STAINLESS 17-4 PH, COND H1150 PASSIVATE
- SEALS: NITRILE

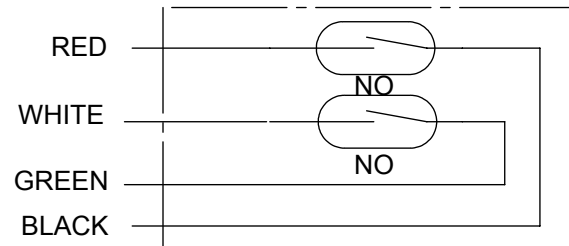
2. FASTENERS AND SWITCH PROBE ARE THE ONLY METAL IN ELECTRICAL CONTACT WITH THE MOUNTING SURFACE
3. ALL OTHER MATERIALS ARE ELECTRICALLY ISOLATED FROM THE MOUNTING SURFACE
4. ALL MOUNTING MATERIALS INCLUDED WITH SWITCH.
5. SPOTFFACES INDICATED TO HAVE A 32 MIROINCH FINISH WITH NO SWIRL MARKS.
6. MACHINED SURFACE FINISH 63 MICROINCHES MAX.
7. SPECIFICATIONS:

- **CURRENT:** 3 AMP SWITCHING, 6 AMP CARRYING W/ REDUNDANT SWITCHES FOR RELIABILITY
- **POWER:** 100 WATTS
- **DEPTH RATING:** 6,000 METERS
- **ROTATION:** 360° (NO STOPS)
- **INDEXING:** ±45 DEGREE, SPRING DETENT
- **ROV INTERFACE:** API SPECIFICATION T-HANDLE WITH COMPLIANCE
- **PROBE SEAL SYSTEM:** DUAL; FACE AND PISTON

REVISIONS			
REV.	DESCRIPTION	DATE	APP.
A	INITIAL RELEASE	12/16/13	JAN
B	UPDATED PER DESIGN REVIEW	1/16/14	JAN
C	MODIFICATIONS FOR DESIGN REVIEW	6/23/14	JAN
D	SHT 5: .315 -WAS- .235	9/8/2015	RFM



SWITCH PROBE SCHEMATIC DIAGRAM

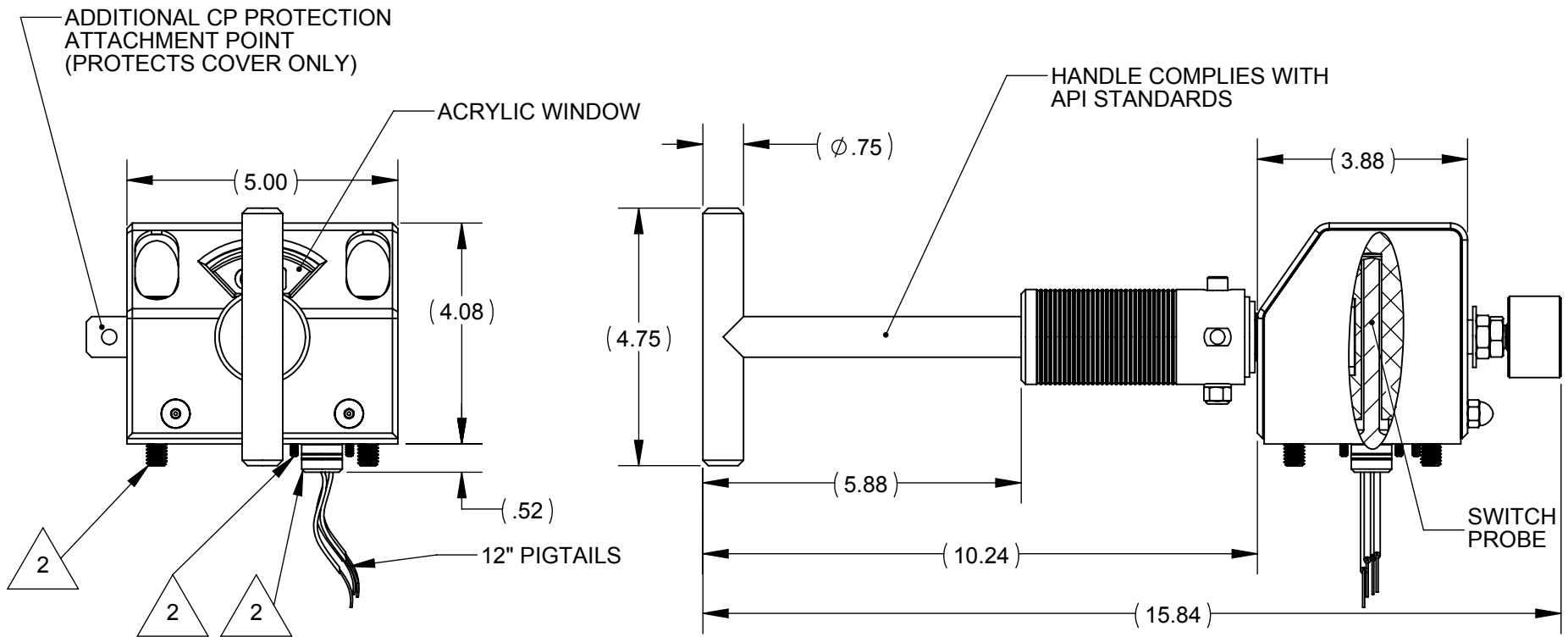


**PROPRIETARY NOTE**  
 All data and information contained or disclosed by this document is confidential and proprietary information of PREVCO Subsea LLC and all rights therein are expressly reserved. By accepting this material the recipient agrees that the material and the information therein is held in confidence and in trust and will not be used, copied, reproduced in whole or in part, nor its content revealed in any manner to others, except to meet the specific purpose for which it was delivered.

TOLERANCES UNLESS NOTED			
.X	.XX	.XXX	ANGLES
±.050	±.010	±.003	±.5°
CONCENTRICITY .004 TIR			
PRIMARY UNITS ARE INCHES			

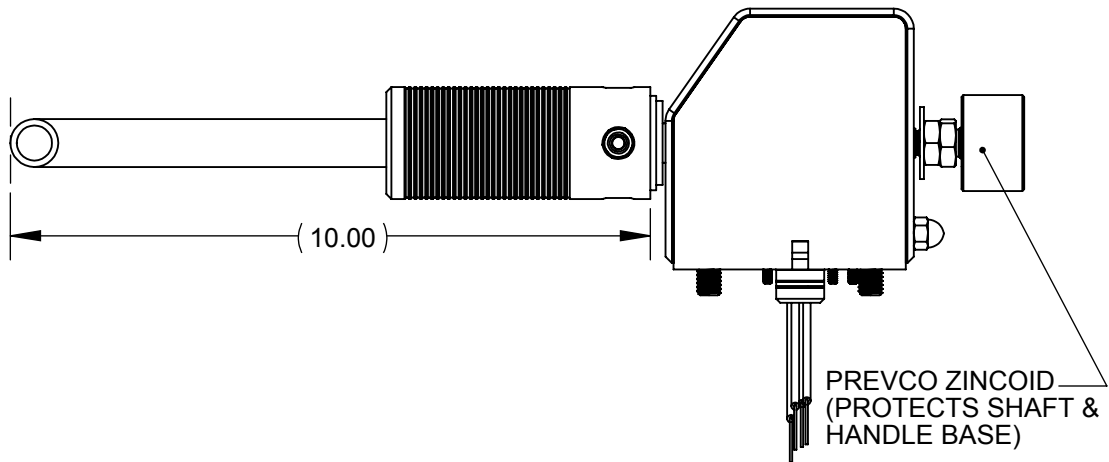
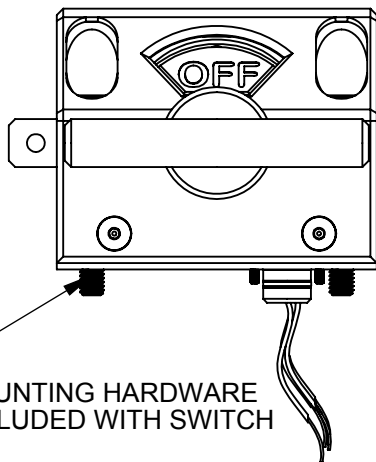
<b>PREVCO SUBSEA LLC</b>	
PROJECT PS2007	MODEL NO. PREFIX
CAGE CODE: 1PV08	
DRAWN BY: JAM	APPR. BY: JAN

DRAWING TITLE <b>PREVCO ROV/DIVER ACTIVATED SWITCH INTERFACE</b>	
DRAWING NO.	<b>02246-001</b>
DRAWN DATE: 12/16/13	SHEET 1 of 5
	REV. D



**HANDLE IN FIRST POSITION.  
ON VS. OFF ORIENTATION OF HANDLE  
SET PER CUSTOMER SPECIFICATION.**

<b>PROPRIETARY NOTE</b> All data and information contained or disclosed by this document is confidential and proprietary information of <b>PREVCO Subsea LLC</b> and all rights therein are expressly reserved. By accepting this material the recipient agrees that the material and the information therein is held in confidence and in trust and will not be used, copied, reproduced in whole or in part, nor its content revealed in any manner to others, except to meet the specific purpose for which it was delivered.	TOLERANCES UNLESS NOTED				<b>PREVCO SUBSEA LLC</b>		DRAWING TITLE <b>PREVCO ROV/DIVER ACTIVATED SWITCH INTERFACE</b>			
	.X	.XX	.XXX	ANGLES	PROJECT	MODEL NO. PREFIX	DRAWING NO. <b>02246-001</b>			
	$\pm .050$	$\pm .010$	$\pm .003$	$\pm .5^\circ$	PS2007	CAGE CODE: 1PV08				
	CONCENTRICITY .004 TIR				DRAWN BY:	JAM	APPR. BY:	JAN	DRAWN DATE: 12/16/13	SHEET 2 of 5
PRIMARY UNITS ARE INCHES										



**HANDLE IN SECOND POSITION.  
ON VS. OFF ORIENTATION OF HANDLE  
SET PER CUSTOMER SPECIFICATION.**

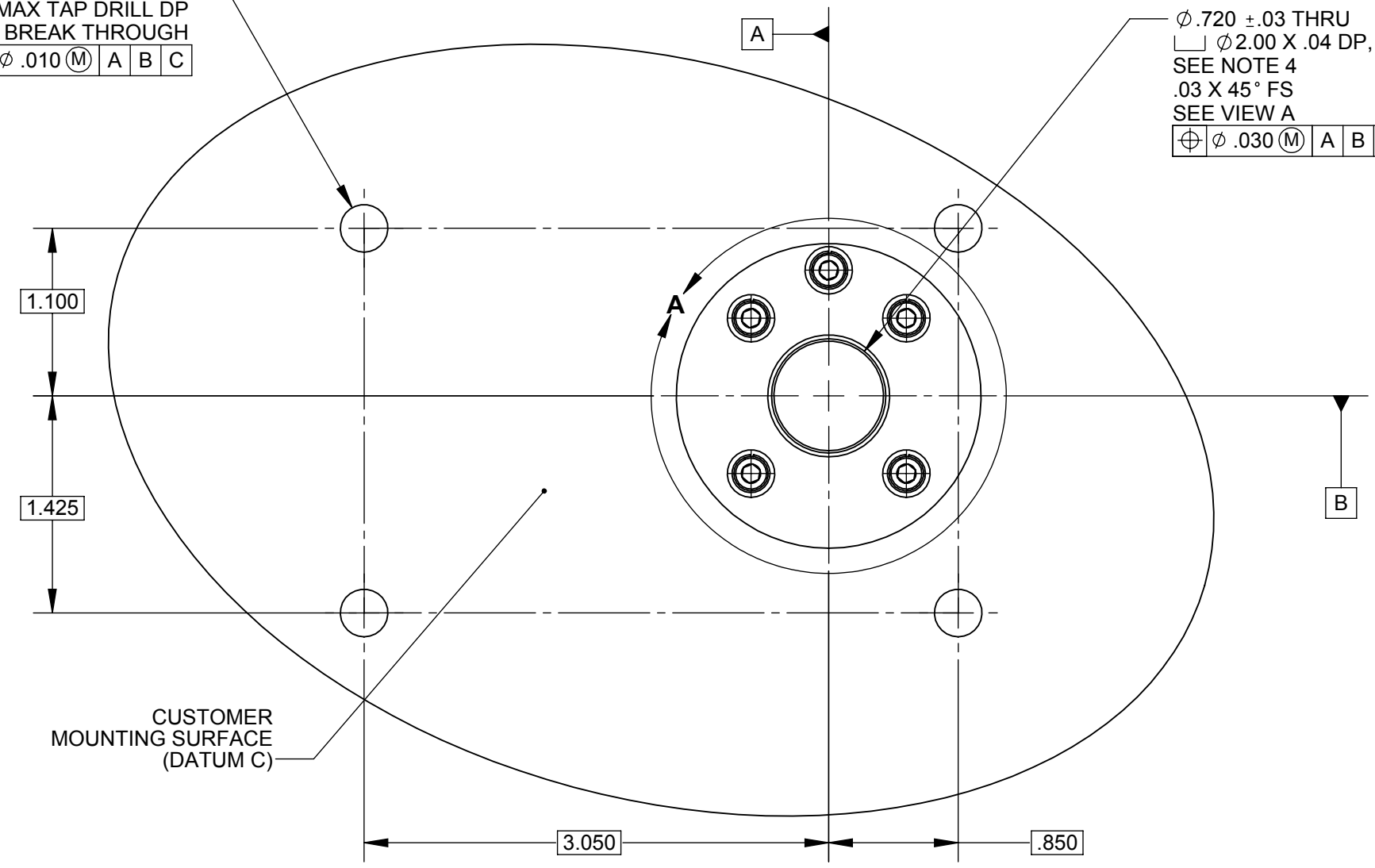
<b>PROPRIETARY NOTE</b> All data and information contained or disclosed by this document is confidential and proprietary information of <b>PREVCO Subsea LLC</b> and all rights therein are expressly reserved. By accepting this material the recipient agrees that the material and the information therein is held in confidence and in trust and will not be used, copied, reproduced in whole or in part, nor its content revealed in any manner to others, except to meet the specific purpose for which it was delivered.	TOLERANCES UNLESS NOTED				<b>PREVCO SUBSEA LLC</b>		DRAWING TITLE <b>PREVCO ROV/DIVER ACTIVATED SWITCH INTERFACE</b>	
	.X	.XX	.XXX	ANGLES	PROJECT PS2007	MODEL NO. PREFIX		
	±.050	±.010	±.003	±.5°	CAGE CODE: 1PV08	In-Air Weight Est. (lbs):		
	CONCENTRICITY .004 TIR				DRAWN BY: JAM	APPR. BY: JAN	DRAWING NO. 02246-001	
PRIMARY UNITS ARE INCHES						DRAWN DATE: 12/16/13	SHEET 3 of 5	REV. D

4X 3/8-16 UNC  
 .75 MINN FULL THD DP  
 .96 MAX TAP DRILL DP  
 DO NOT BREAK THROUGH

$\oplus$	$\phi$ .010	(M)	A	B	C
----------	-------------	-----	---	---	---

$\phi$  .720  $\pm$  .03 THRU  
 $\square$   $\phi$  2.00 X .04 DP, NS  
 SEE NOTE 4  
 .03 X 45° FS  
 SEE VIEW A

$\oplus$	$\phi$ .030	(M)	A	B	C
----------	-------------	-----	---	---	---



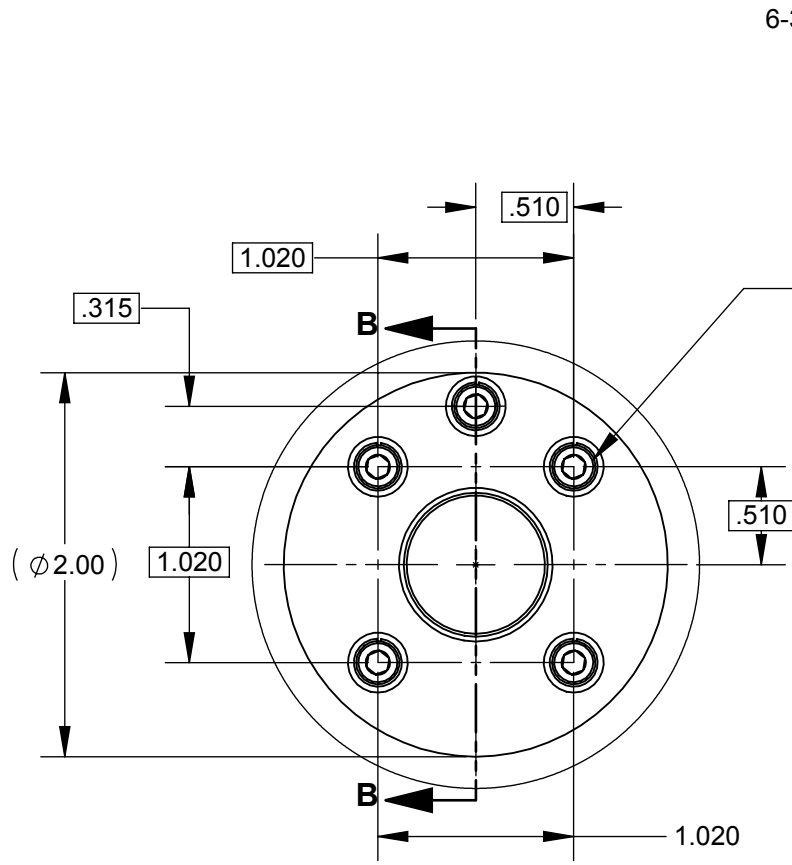
CUSTOMER  
 MOUNTING SURFACE  
 (DATUM C)

**PROPRIETARY NOTE**  
 All data and information contained or disclosed by this document is confidential and proprietary information of PREVCO Subsea LLC and all rights therein are expressly reserved. By accepting this material the recipient agrees that the material and the information therein is held in confidence and in trust and will not be used, copied, reproduced in whole or in part, nor its content revealed in any manner to others, except to meet the specific purpose for which it was delivered.

TOLERANCES UNLESS NOTED			
.X	.XX	.XXX	ANGLES
$\pm$ .050	$\pm$ .010	$\pm$ .003	$\pm$ .5°
CONCENTRICITY .004 TIR			
PRIMARY UNITS ARE INCHES			

<b>PREVCO SUBSEA LLC</b>		
PROJECT	MODEL NO. PREFIX	
PS2007		
CAGE CODE:	1PV08	
DRAWN BY:	JAM	APPR. BY: JAN

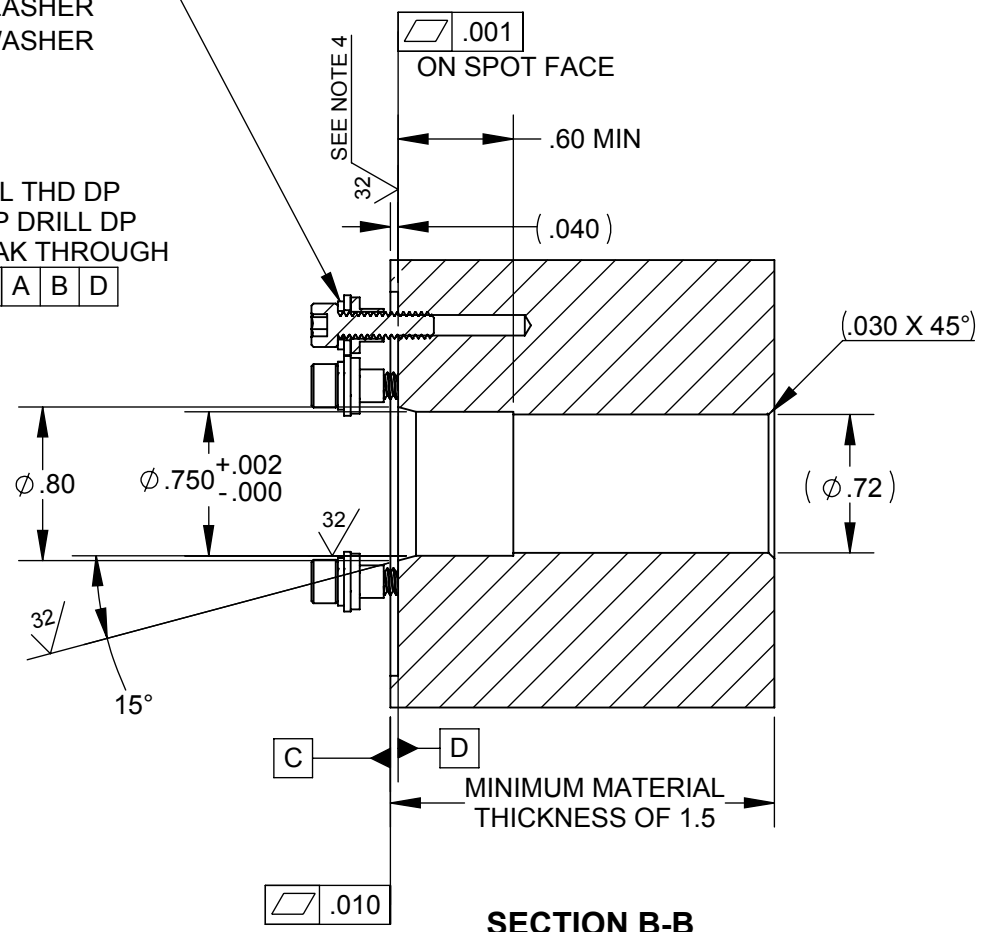
DRAWING TITLE	
PREVCO ROV/DIVER ACTIVATED SWITCH INTERFACE	
DRAWING NO.	02246-001
DRAWN DATE: 12/16/13	SHEET 4 of 5
REV. D	



**DETAIL A**  
**SCALE 1 : 1**

6-32UNC X .50 LG BOLT  
LOCK WASHER  
FLAT WASHER  
SHOULDER WASHER

5X 6-32 UNC  
.330 MIN FULL THD DP  
.660 MAX TAP DRILL DP  
DO NOT BREAK THROUGH  
⊕ ⌀ .015 (M) A B D



**SECTION B-B**  
**SCALE 1 : 1**

**PROPRIETARY NOTE**  
All data and information contained or disclosed by this document is confidential and proprietary information of **PREVCO Subsea LLC** and all rights therein are expressly reserved. By accepting this material the recipient agrees that the material and the information therein is held in confidence and in trust and will not be used, copied, reproduced in whole or in part, nor its content revealed in any manner to others, except to meet the specific purpose for which it was delivered.

TOLERANCES UNLESS NOTED			
.X	.XX	.XXX	ANGLES
±.050	±.010	±.003	±.5°
CONCENTRICITY .004 TIR			
PRIMARY UNITS ARE INCHES			

<b>PREVCO SUBSEA LLC</b>		
PROJECT	MODEL NO. PREFIX	
PS2007		
CAGE CODE: 1PV08		
DRAWN BY: JAM	APPR. BY: JAN	

DRAWING TITLE		
PREVCO ROV/DIVER ACTIVATED SWITCH INTERFACE		
DRAWING NO.	02246-001	
DRAWN DATE: 12/16/13	SHEET 5 of 5	REV. D