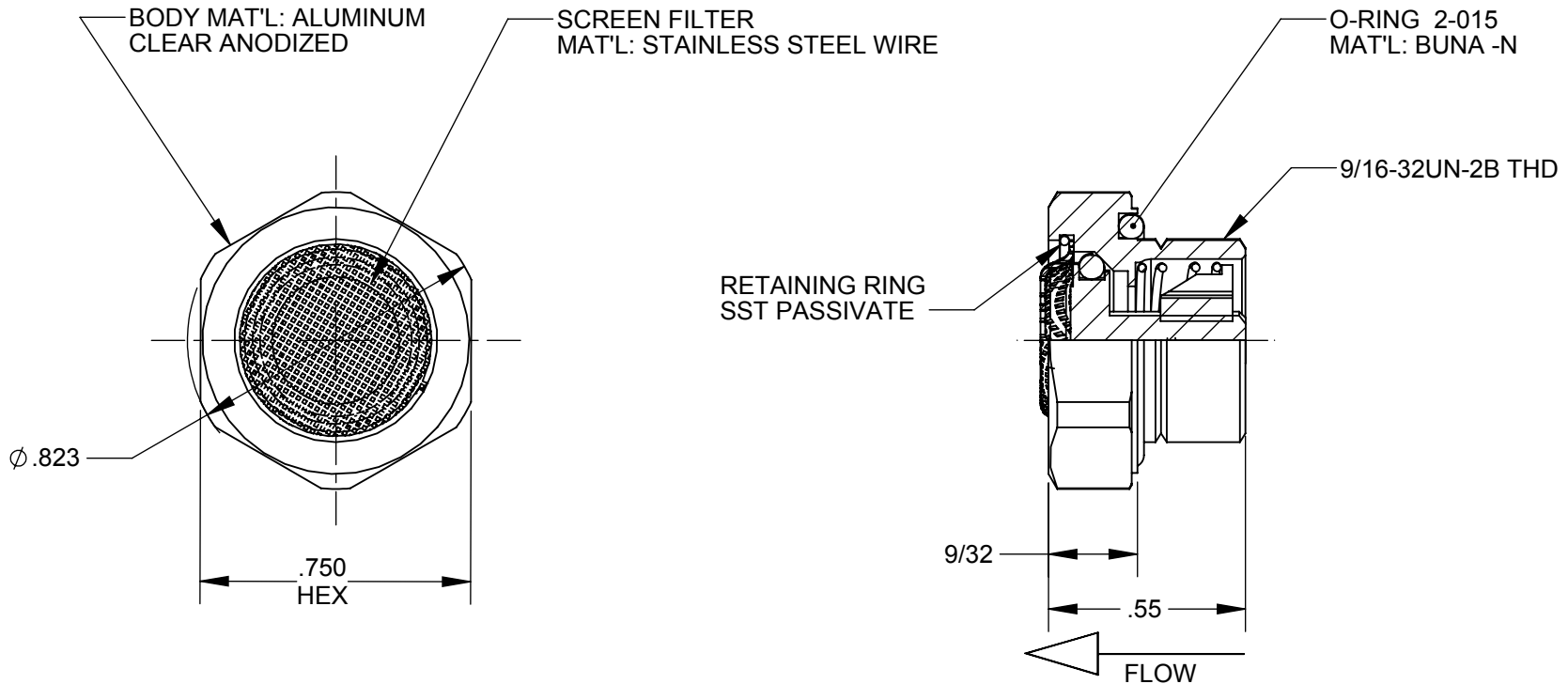


NOTES:

1. CRACKING PRESSURE - FACTORY SET TO 5 PSI (NOT ADJUSTABLE).
2. AIR FLOW: 4.0 SCFM @ 3.0 PSIG W/1.5 PSIG CRACKING PRESSURE.
3. TEMPERATURE RANGE: -65°F TO +180°F.
4. WEIGHT - 0.25 OZ (17 GRAMS).
5. CRACKING PRESSURE ±15% OF NOMINAL, RESEAT WITHIN 20% OF NOMINAL CRACKING PRESSURE.
6. MAXIMUM DEPTH RATING 100 METERS.
7. ALL DIMENSIONS ARE FOR REFERENCE ONLY.
8. RECOMMENDED INSTALLATION TORQUE:
 METAL 35IN-LBS
 PLASTIC 24IN-LBS



REVISIONS			
REV.	DESCRIPTION	DATE	APP.
A	REDRAWN AND UPDATED	9/27/12	JAN
B	ADDED RECOMMENDED INSTALLATION TORQUE	5/14/13	JAN



PROPRIETARY NOTE
 All data and information contained or disclosed by this document is confidential and proprietary information of **PREVCO Subsea LLC** and all rights therein are expressly reserved. By accepting this material the recipient agrees that the material and the information therein is held in confidence and in trust and will not be used, copied, reproduced in whole or in part, nor its content revealed in any manner to others, except to meet the specific purpose for which it was delivered.

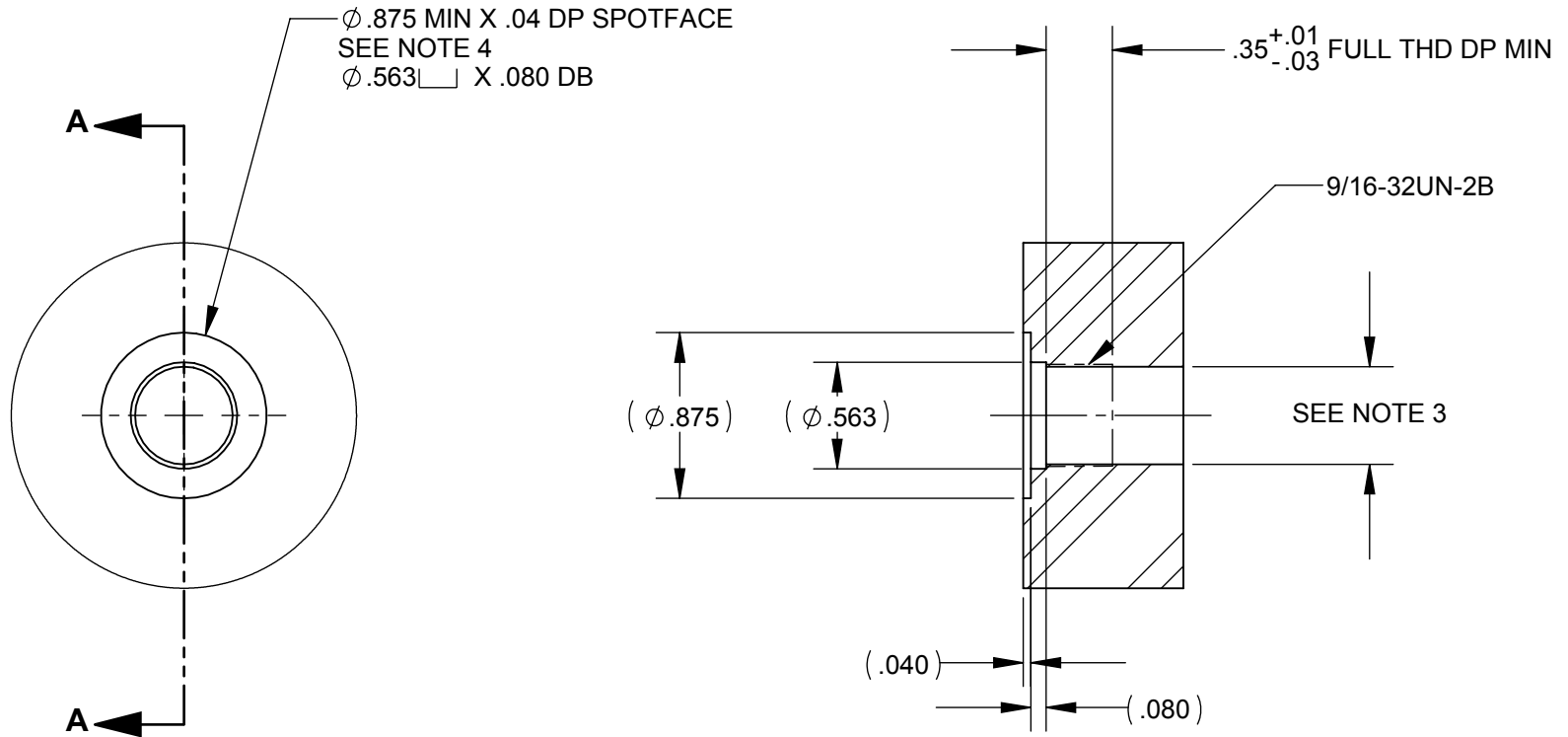
TOLERANCES UNLESS NOTED			
.X	.XX	.XXX	ANGLES
±.050	±.010	±.003	±.5°
CONCENTRICITY .004 TIR			
PRIMARY UNITS ARE INCHES			

PREVCO SUBSEA LLC			
PROJECT		MODEL NO. PREFIX	
GENERIC		N/A	
CAGE CODE: 1PV08			
DRAWN BY:	MAD	APPR. BY:	JAN

DRAWING TITLE			
PRESSURE RELIEF VALVE ALUMINUM - OUTLINE DRAWING			
DRAWING NO.		00464-001	
DRAWN DATE: 9/26/2012	SHEET 1 of 2	REV. B	

NOTES:

1. IF BASE MATERIAL IS ALUMINUM, ALL DIMENSIONS APPLY AFTER ANODIZING.
2. BREAK ALL SHARP EDGES .010 MAX.
3. TAP DRILL THRU UNLESS OTHERWISE SPECIFIED ON PARENT DRAWING.
4. SPOTFACE INDICATED SHALL HAVE NO SWIRLMARKS.



**SECTION A-A
MOUNTING INTERFACE**

<p>PROPRIETARY NOTE</p> <p>All data and information contained or disclosed by this document is confidential and proprietary information of PREVCO Subsea LLC and all rights therein are expressly reserved. By accepting this material the recipient agrees that the material and the information therein is held in confidence and in trust and will not be used, copied, reproduced in whole or in part, nor its content revealed in any manner to others, except to meet the specific purpose for which it was delivered.</p>	TOLERANCES UNLESS NOTED				PREVCO SUBSEA LLC		DRAWING TITLE			
	.X	.XX	.XXX	ANGLES	PROJECT	MODEL NO. PREFIX	PRESSURE RELIEF VALVE ALUMINUM - OUTLINE DRAWING			
	$\pm .050$	$\pm .010$	$\pm .003$	$\pm .5^\circ$	GENERIC	N/A	DRAWING NO.			
	CONCENTRICITY .004 TIR				CAGE CODE: 1PV08		00464-001			
PRIMARY UNITS ARE INCHES				DRAWN BY:	MAD	APPR. BY:	JAN	DRAWN DATE: 9/26/2012	SHEET 2 of 2	REV. B